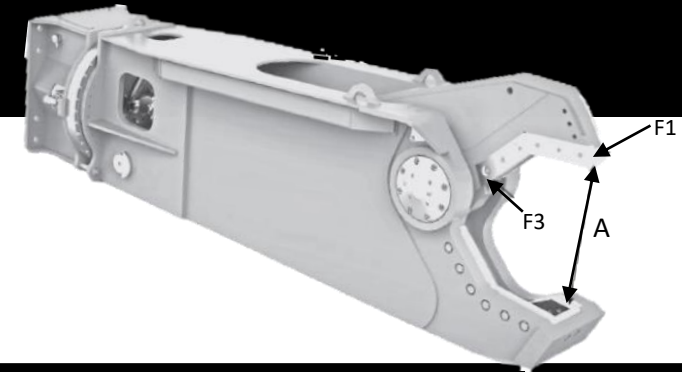




# SC Range – Scrap Shears



Technical Specifications		SC310	SC450	SC700	SC1300	SC2200	SC3200	SC4000	SC5000	SC6500	SC8000	SC10000	SC15000	SC20000
Shear Weight	lb	695	1060	1,755	2,890	5,000	7,190	9,195	11,250	15,100	17,860	22,780	32,300	46,080
Carrier's weight (stick)	lb	4,400 / 11,025	11,025 / 17,640	17,640 / 30,865	28,660 / 44,090	41,890 / 61,730	59,525 / 85,980	70,550 / 99,210	83,780 / 121,260	110,230 / 154,325	154,325 / 242,510	over 187,395	over 264,555	over 374,785
Carrier's weight (boom)	lb	2,205 / 8,820	4,410 / 13,230	11,025 / 17,640	17,640 / 30,865	30,865 / 44,090	44,090 / 66,140	55,120 / 88,185	66,140 / 110,230	88,185 / 132,280	110,230 / 176,370	over 132,280	over 176,370	over 242,510
Rotation Working pressure	psi	1,740	1,740	1,740	1,740	1,740	1,740	1,740	1,740	1,740	1,740	1,740	1,740	2,176
Rotation oil flow min/max	gpm	1.1 / 1.3	1.3 / 2.1	1.3 / 2.1	5.3 / 7.9	5.3 / 7.9	5.3 / 7.9	5.3 / 7.9	10.6 / 13.2	10.6 / 13.2	10.6 / 13.2	21.1 / 26.4	21.1 / 26.4	21.1 / 26.4
Cylinder Oil	gpm	15.9 / 26.4	18.5 / 26.4	23.8 / 26.4	39.6 / 66	52.8 / 79.3	74 / 92.5	79.3 / 118.9	92.5 / 132.1	105.7 / 158.5	132.1 / 211.3	184.9 / 264.2	237.8 / 317	264.2 / 396.3
Cylinder working pressure	psi	2,900 / 3,626	2,900 / 3,626	4,060 / 4,640	5,076	5,076	5,076	5,076	5,076	5,076	5,076	5,076	5,076	5,076
Max opening	in	10.83	13.78	16.34	17.72	18.90	22.64	26.38	29.13	32.68	34.25	39.53	45.08	48.23
Tip closing force (F1)	lb	61,729	70,548	132,277	134,482	211,644	321,875	363,763	429,901	485,017	529,109	617,294	782,641	1,014,126
Throat closing force (F3)	lb	187,393	275,578	462,971	606,271	881,849	1,366,866	1,609,374	1,962,114	2,204,622	2,645,546	2,910,101	3,527,395	3,747,857
Rotation 360°		Hydraulic	Hydraulic	Hydraulic	Hydraulic	Hydraulic	Hydraulic	Hydraulic	Hydraulic	Hydraulic	Hydraulic	Hydraulic	Hydraulic	Hydraulic
<b>Cutting data Profile</b>														
	in	3.15	3.94	4.72	7.87	11.81	15.75	17.72	19.69	21.65	23.62	29.53	37.40	43.31
	in	2.36	2.76	3.94	5.51	7.87	10.24	11.02	12.60	14.17	15.75	21.65	23.62	29.53
	in	1.18	1.18	1.57	1.77	2.17	2.56	2.76	2.95	3.35	3.94	4.33	5.51	6.50

\*Promove reserves the right to modify the technical data without notice